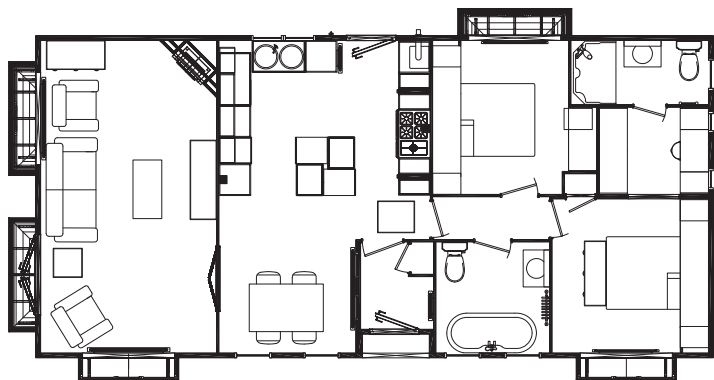


The Pendle

42'x20', 12.802m x 6.090m (2 double bedrooms, en-suite)

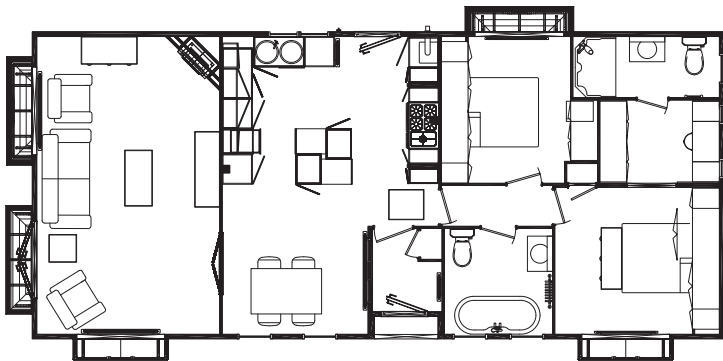
	Length	Width
	m (ft)	m (ft)
Lounge	3.3 (10'10")	5.9 (19'4")
Kitchen/Diner	4.0 (13'1")	15.9 (19'4")
En-suite	2.6 (8'6")	1.2 (3'11")
Bathroom	2.1 (7'0")	2.1 (6'10")
Bedroom 1	3.0 (9'8")	2.9 (9'6")
Bedroom 2	2.6 (8'5")	2.9 (9'6")



The Pendle

45'x20', 13.72m x 6.090m (2 double bedrooms, en-suite)

	Length	Width
	m (ft)	m (ft)
Lounge	3.3 (10'10")	5.9 (19'4")
Kitchen/Diner	4.0 (13'1")	5.9 (19'4")
En-suite	2.6 (8'6")	1.2 (3'11")
Bathroom	2.1 (7'0")	2.1 (6'10")
Bedroom 1	3.0 (9'8")	2.9 (9'6")
Bedroom 2	2.6 (8'5")	2.9 (9'6")



The Pendle

48'x20', 14.63 x 6.090m

(2 double bedrooms, en-suite, study, utility)

	Length	Width
	m (ft)	m (ft)
Lounge	3.3 (10'10")	5.9 (19'4")
Kitchen/Diner	3.7 (12'0")	5.9 (19'4")
Utility	1.5 (5'0")	2.9 (9'6")
En-suite	2.6 (8'6")	2.9 (9'6")
Bathroom	2.1 (7'0")	2.1 (6'10")
Study	1.8 (5'10")	2.1 (6'10")
Bedroom 1	3.0 (9'8")	2.9 (9'6")
Bedroom 2	2.6 (8'5")	2.9 (9'6")

