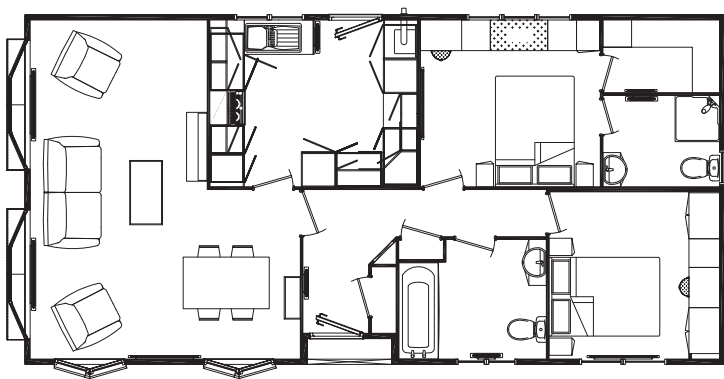


The Cotswold

40'x20', 12.192m x 6.090m (2 double bedrooms, en-suite)

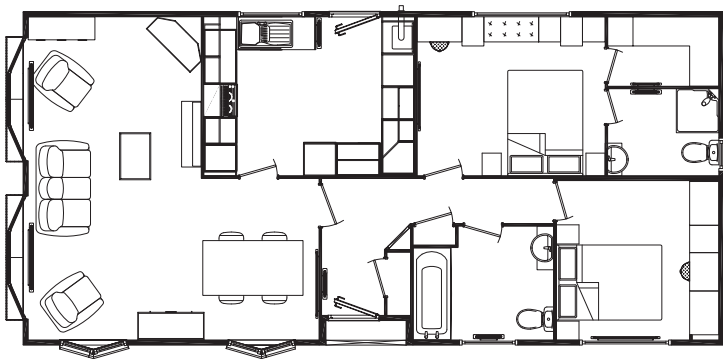
	Length	Width
	m (ft)	m (ft)
Lounge/Diner	4.7 (15'15")	5.9 (19'4")
Kitchen	3.6 (11'10")	2.9 (9'7")
En-suite	2.0 (6'8")	1.6 (5'2")
Bathroom	2.5 (8'3")	2.1 (6'10")
Bedroom 1	3.1 (10'3")	2.9 (9'6")
Bedroom 2	3.0 (9'9")	2.9 (9'6")



The Cotswold

42'x20', 12.802m x 6.090m (2 double bedrooms, en-suite)

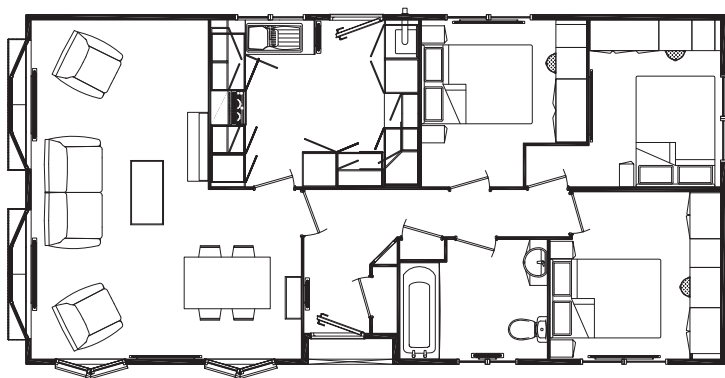
	Length	Width
	m (ft)	m (ft)
Lounge/Diner	5.3 (17'5")	5.9 (19'4")
Kitchen	3.9 (12'7")	2.9 (9'6")
En-suite	2.0 (6'8")	2.9 (9'6")
Bathroom	2.5 (8'3")	2.1 (6'10")
Bedroom 1	3.4 (11'3")	2.9 (9'6")
Bedroom 2	3.0 (9'8")	2.9 (9'6")



The Cotswold

40'x20', 12.19m x 6.090m (3 double bedrooms)

	Length	Width
	m (ft)	m (ft)
Lounge/Diner	4.7 (15'5")	5.9 (19'4")
Kitchen	3.6 (11'10")	2.9 (9'6")
Bathroom	1.7 (5'6")	2.0 (6'8")
Bedroom 1	3.0 (9'9")	2.9 (9'6")
Bedroom 2	2.3 (7'6")	2.9 (9'6")
Bedroom 3	2.9 (9'5")	2.9 (9'6")



The Cotswold

45'x20', 13.72m x 6.090m (2 double bedrooms, en-suite, utility)

	Length	Width
	m (ft)	m (ft)
Lounge/Diner	5.9 (19'5")	5.9 (19'4")
Kitchen	3.3 (10'8")	2.9 (9'6")
Utility	1.7 (5'5")	2.9 (9'6")
En-suite	1.8 (5'11")	1.6 (5'2")
Bathroom	2.6 (8'5")	2.1 (6'9")
Bedroom 1	3.2 (10'4")	2.9 (9'6")
Bedroom 2	3.3 (10'9")	2.9 (9'6")

