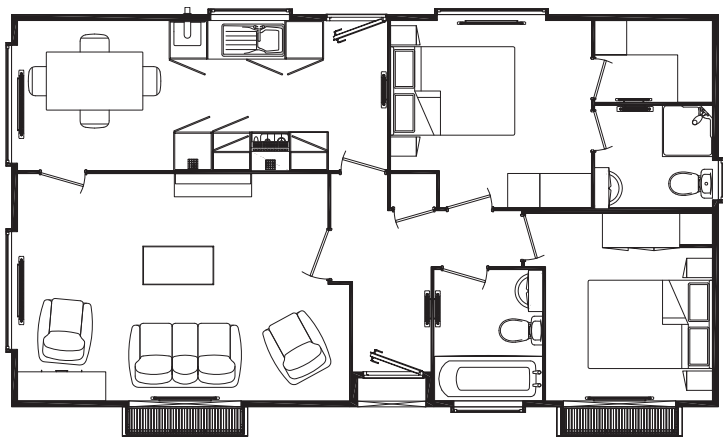


# The Chiltern

36'x20', 10.973m x 6.090m (2 double bedrooms, en-suite)

	Length		Width	
	m	(ft)	m	(ft)
Lounge	5.2	(16'11")	3.5	(11'6")
Kitchen	3.4	(11'2")	2.3	(7'7")
Diner	2.3	(7'8")	2.3	(7'7")
En-suite	1.8	(6'0")	1.6	(5'2")
Bathroom	1.7	(5'6")	2.0	(6'8")
Bedroom 1	3.1	(10'3")	2.9	(9'6")
Bedroom 2	3.0	(9'8")	2.9	(9'6")

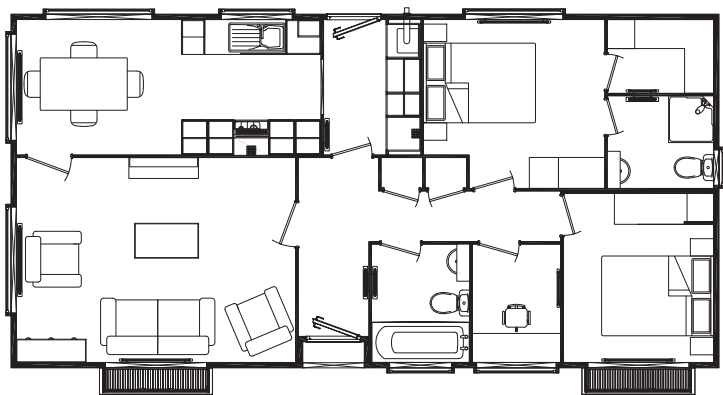


# The Chiltern

42'x20', 12.802m x 6.090m

(2 double bedrooms, en-suite, utility, study)

	Length m (ft)	Width m (ft)
Lounge	5.4 (17'9")	3.5 (11'6")
Kitchen	2.4 (7'11")	2.3 (7'7")
Utility	1.7 (5'5")	2.3 (7'7")
Diner	3.4 (9'3")	2.3 (7'7")
Study	1.5 (5'0")	2.0 (6'8")
En-suite	1.8 (6'0")	1.6 (5'2")
Bathroom	1.7 (5'6")	2.0 (6'8")
Bedroom 1	3.1 (10'2")	2.9 (9'6")
Bedroom 2	2.6 (8'6")	2.9 (9'6")

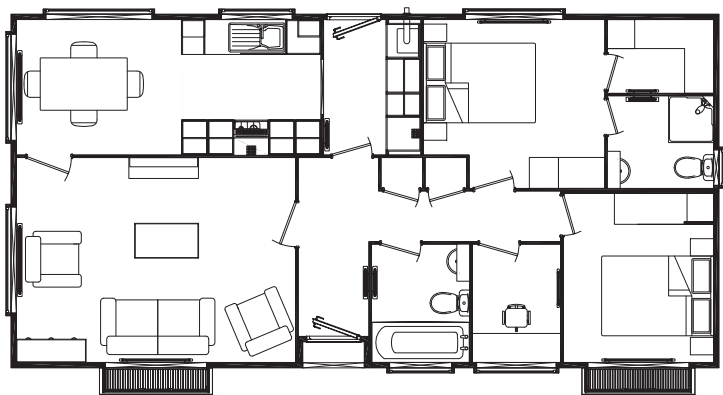


# The Chiltern

40'x20', 12.192m x 6.090m

(2 double bedrooms, en-suite, utility, study)

	Length m (ft)	Width m (ft)
Lounge	4.8 (15'9")	3.5 (11'6")
Kitchen	2.4 (7'11")	2.3 (7'7")
Utility	1.7 (5'5")	2.3 (7'7")
Diner	2.8 (9'3")	2.3 (7'7")
Study	1.5 (5'0")	2.1 (6'10")
En-suite	1.8 (6'0")	1.6 (5'2")
Bathroom	1.7 (5'6")	2.0 (6'8")
Bedroom 1	3.1 (10'2")	2.9 (9'6")
Bedroom 2	2.6 (8'6")	2.9 (9'6")



# The Chiltern

45'x20', 13.72m x 6.090m

(2 double bedrooms, en-suite, utility, study)

	Length m (ft)	Width m (ft)
Lounge	5.7 (18'9")	3.5 (11'6")
Kitchen	2.4 (7'11")	2.3 (7'7")
Utility	1.7 (5'5")	2.3 (7'7")
Diner	3.7 (10'3")	2.3 (7'7")
Study	1.8 (6'0")	2.0 (6'8")
En-suite	2.1 (7'0")	1.6 (5'2")
Bathroom	1.7 (5'6")	2.0 (6'8")
Bedroom 1	3.4 (11'2")	2.9 (9'6")
Bedroom 2	2.9 (9'6")	2.9 (9'6")

