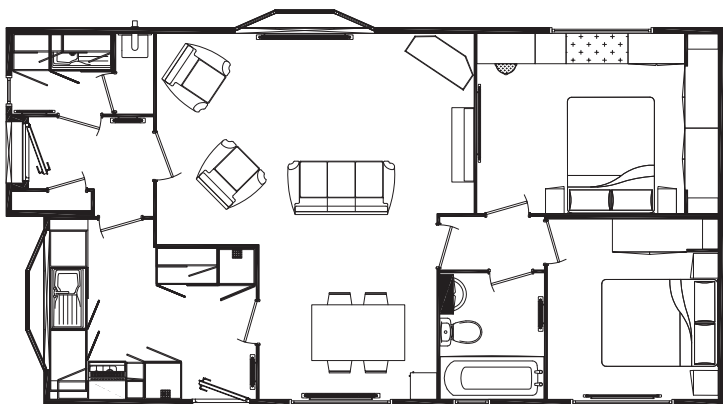


The Brecon

38'x36'x20', 11.582m x 10.973m x 6.090m

(2 double bedrooms, utility)

	Length	Width
	m (ft)	m (ft)
Lounge	5.1 (16'9")	3.4 (11'2")
Kitchen	3.3 (10'11")	2.9 (9'6")
Utility	1.6 (5'4")	1.3 (4'3")
Diner	3.9 (12'8")	2.5 (8'2")
Bathroom	1.7 (5'6")	2.0 (6'8")
Bedroom 1	3.4 (11'0")	2.9 (9'6")
Bedroom 2	2.8 (9'0")	2.9 (9'6")

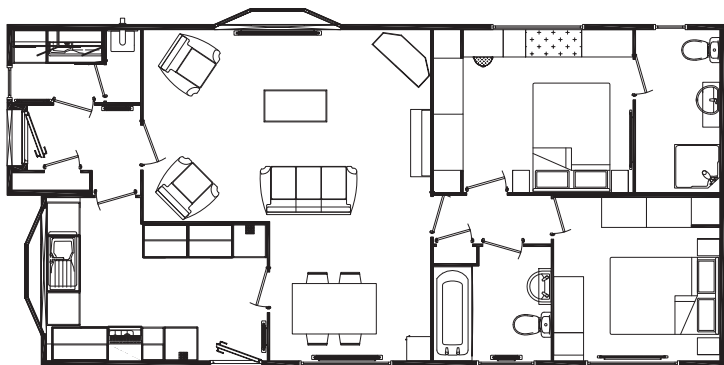


The Brecon

42'x40'x20', 12.802m x 6.090m

(2 double bedrooms, en-suite, utility)

	Length m (ft)	Width m (ft)
Lounge	3.42 (11'16")	5.13 (16'8")
Kitchen	3.94 (12'9")	2.95 (9'6")
Utility	1.3 (4'25")	1.64 (5'3")
Diner	2.44 (8'0")	2.87 (9'4")
En-suite	1.5 (4'9")	2.9 (9'5")
Bathroom	2.04 (6'6")	2.10 (6'8")
Bedroom 1	2.9 (9'5")	3.56 (11'6")
Bedroom 2	2.96 (9'6")	2.91 (9'5")



The Brecon

46'x44'x20', 14.02/13.41m x 6.09/6.090m

(2 double bedrooms, en-suite, utility)

	Length m (ft)	Width m (ft)
Lounge	6.3 (20'9")	3.4 (11'2")
Kitchen	3.9 (12'11")	3.0 (9'8")
Utility	1.6 (5'2")	1.3 (4'3")
Diner	4.1 (13'5")	2.5 (8'1")
En-suite	1.5 (4'11")	2.9 (9'6")
Bathroom	2.1 (6'10")	2.0 (6'8")
Bedroom 1	3.0 (9'11")	2.9 (9'6")
Bedroom 2	3.0 (9'8")	2.9 (9'6")

